



WMCCCL Round 9 Baggeridge Country Park 17/11/19

Venue

Baggeridge Country Park **DY3 4HB**. The entrance to the venue is from Gospel End, Sedgley. There are no height barriers for the car-park, but there are overhanging trees so please take care.

Parking

Please try to park considerately as the park is still open to other users (i.e. no awnings / gazebos in the car park please). There is an ALL DAY PARKING CHARGE OF £3.00 AND YOU WILL NEED COINS as the machines do not accept cards. The local authority does check, particularly on event days, so please make sure you buy a ticket.

Sign On

Sign on will be in the paddock as in past years, along with the chip timing.

Course

Please refer to the course maps for all courses. There will be shortened courses for the U8, U10 and U12 categories. All riders from U14 will be riding the full course. Remember that this is a public park, so please be considerate to other users of the park at all times. Please pitch gazebos in the spectator area. The routes to the start and the pits will be signed from here.

Café

The Country Park café will be stocked with tea & cake etc

Reminders:

- You must ride the course as it is laid out. You may NOT ride through the course markings on purpose to make a section easier (as one rider did repeatedly last year). The commissaires will be briefed on who to watch in particular.
- **Treat other riders with the utmost respect and courtesy whilst practicing, racing and afterwards. We want the league to be a friendly place that is inclusive to riders of all abilities and backgrounds. Offensive, belittling or aggressive behaviour will not be tolerated.**

We look forward to seeing you on Sunday, and hope you have a great days racing.

Matthew Harris

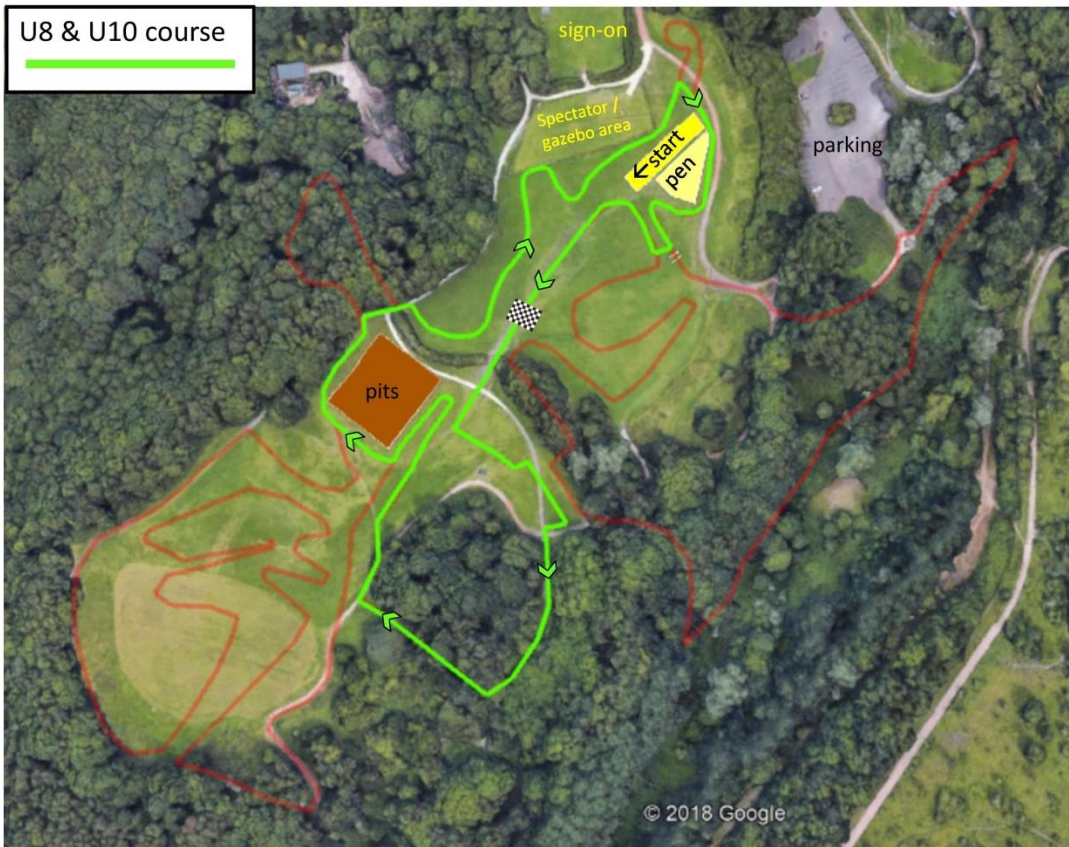
Halesowen A & CC (Event organiser)

MAIN COURSE



U12 course





Parking layout:

The car park is made up of lots of different areas. The lower level will fill up quickly, but there is a lot more on the upper level and we can use the overflow parking area should it be necessary.

