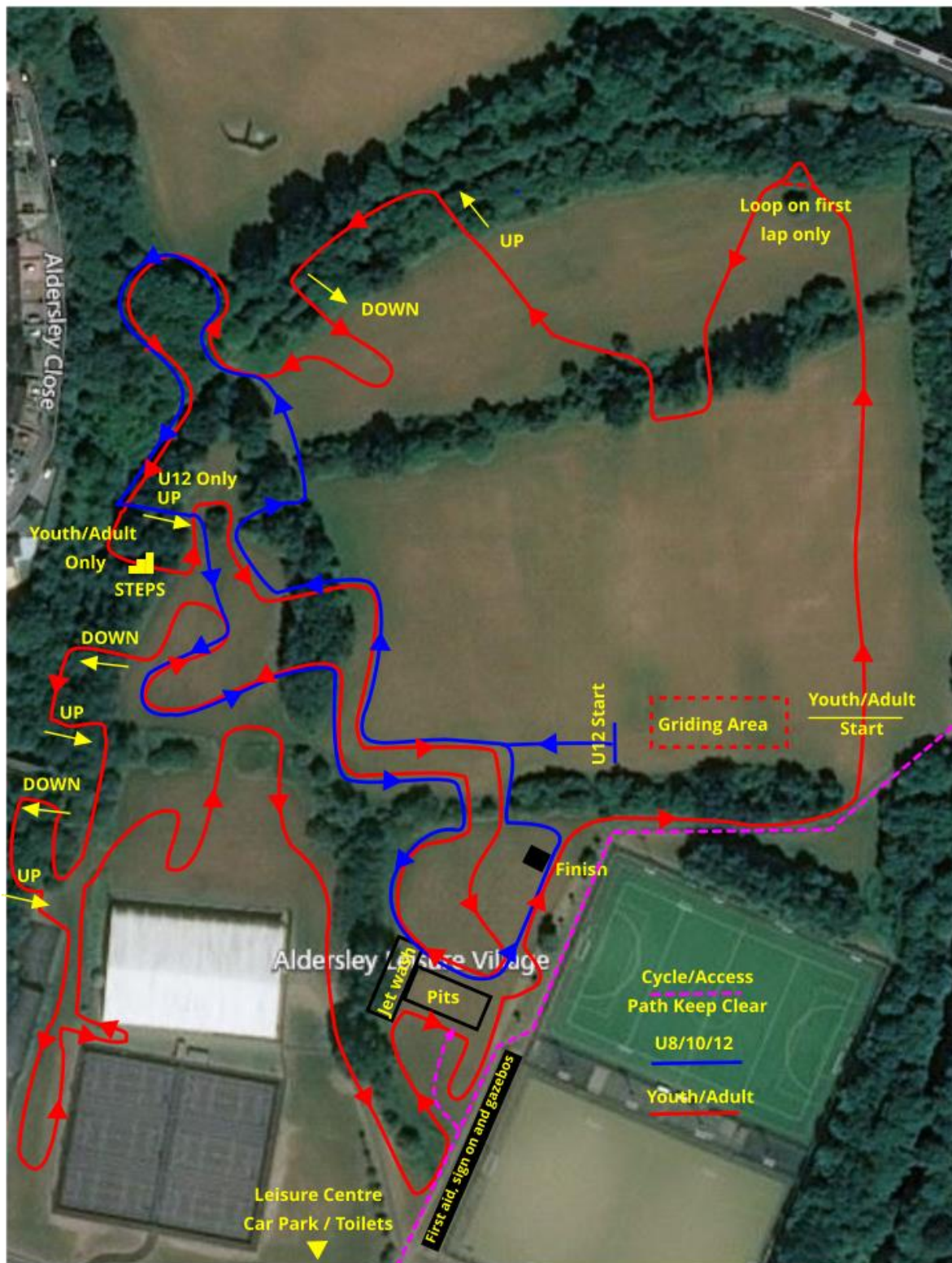


## Wolverhampton Wheelers round of the Shimano Lazer WMCCL Cyclo-Cross League

22<sup>nd</sup> December 2019

Thank you to all that are intending to come and ride, we look forward to seeing you at our Christmas Cross.

The course contains many of the features of previous years but due to the rather damp weather of late (ok all autumn and now winter...) we've had to move all the start and finish along with the area where clubs usually put up their gazebos to the all-weather hockey pitches.



This area is easy to access and has the advantage of fairly dry tarmac to stand things on (if you avoid some of the puddles that is!) and easy close access to the car parks. It does however limit spectator viewing so if you want to walk around the course then wellies or at least walking boots are recommended. Access to the pits is fairly close but there isn't any water available so bring plenty.

The car parks are quite large and ours is the only event on apart from a hockey match in the morning. As we will be alongside the path to the hockey pitches, this needs to be kept clear for participant access as well as first aid if required. Please park within the spaces and don't take more than one up just so you have some where to warm up. There are lots of tarmac areas around so you should be able to find somewhere.

Toilets, changing rooms and showers are available in the centre but please stamp your feet, scrape your soles and try to carry as little mud as possible into the centre and DEFINITELY NO WASHING OF KIT in the showers or we'll face the prospect of becoming homeless!

We'll be selling cakes, coffee, tea and hot chocolate by the sign on and the centre does provide some hot food (hot dogs, toasties etc.) but please support us where you can 😊.

With this being the second shortest day of the year and the venue being a public space where anything left lying about is fair game to the local bored youths, we can't put any of the course up the day before. This means we have to build the course and put up everything up starting in the dark. The centre are being really helpful by opening early and putting the flood lights on that cover the hockey pitches so we can get an early start but we may not have the course ready that early so *please* be patient.

Signing on will prioritise the early races for the U8/10/12 and then on to Vets so if you see others that you know are racing before you, please stand aside and let them sign so they can get to their race in plenty of time.

Depending on the weather and when we finally get started, we may have to alter some of the start times by a few minutes – we'll keep do our best to keep you updated of any changes that we feel we have to make.

Due to having to move the course we have the unfortunate problem of having to run the U12 course on parts of the adult course in the opposite direction which means sections won't be available for practice until we've changed the course over for all later races. Other areas can be ridden as long as you don't get in the way of the elves racing... you wouldn't want to upset the little people!

This is a public facility so there will be other people around that don't care for and understand the enthusiasm we have for ploughing through mud in the strangest of clothing so please be courteous and accommodating where necessary.

Hopefully the weather will be kind and we'll have a good days racing – there will be mud but most of it should be gone by next year!

Wishing you all a Merry Christmas and a Happy New Year from everyone at Wolverhampton Wheelers CC.

**Alastair Bacon** (Event Organiser)