

Redditch Road and Path CC

Are pleased to be hosting Round 2 of the Shimano Lazer WMCCL on Sunday 15th September 2019.

At Abbey Stadium Sports and Fitness Centre, Birmingham Road, Redditch, Worcestershire, B97 6EJ.

HEIGHT RESTRICTED VENUE - PLEASE BE CAREFUL WITH BIKES ON ROOF RACKS OR TALLER VANS

We hope that this venue provides an interesting and exciting course for all riders. Note – this is a public venue, please be courteous and polite.

Sign On – opens at 08:45

If you know your league number collect it from the first desk and move through to the sign on table, pay your entry fee and then collect your timing chip using your BC card as deposit. Having the correct money will be much appreciated. Registered Rider Numbers are kept by you for the season but timing chips must be returned after each race.

If you have multiple riders in your family please ensure the correct numbers and chips are used.

We will continue to sign on until 30 minutes before each race starts or when the course limit is reached, so please sign on as soon as you arrive.

Venue

Parking - there will be 104 car parking spaces exclusive to the event plus 150 spaces which will be shared with other users of the Abbey Stadium.

In addition there is further parking close by, just off Millrace Road.

PLEASE NOTE there are HEIGHT BARRIERS (2.1 metres) at all of these car parks.

Toilets and changing rooms - available within the venue, through the rear door and turn left. These are shared with other venue users.

Refreshments - drinks and hot food available throughout the day, provided by Rubicon Leisure catering, the new management company for the venue. Please support this facility if possible.

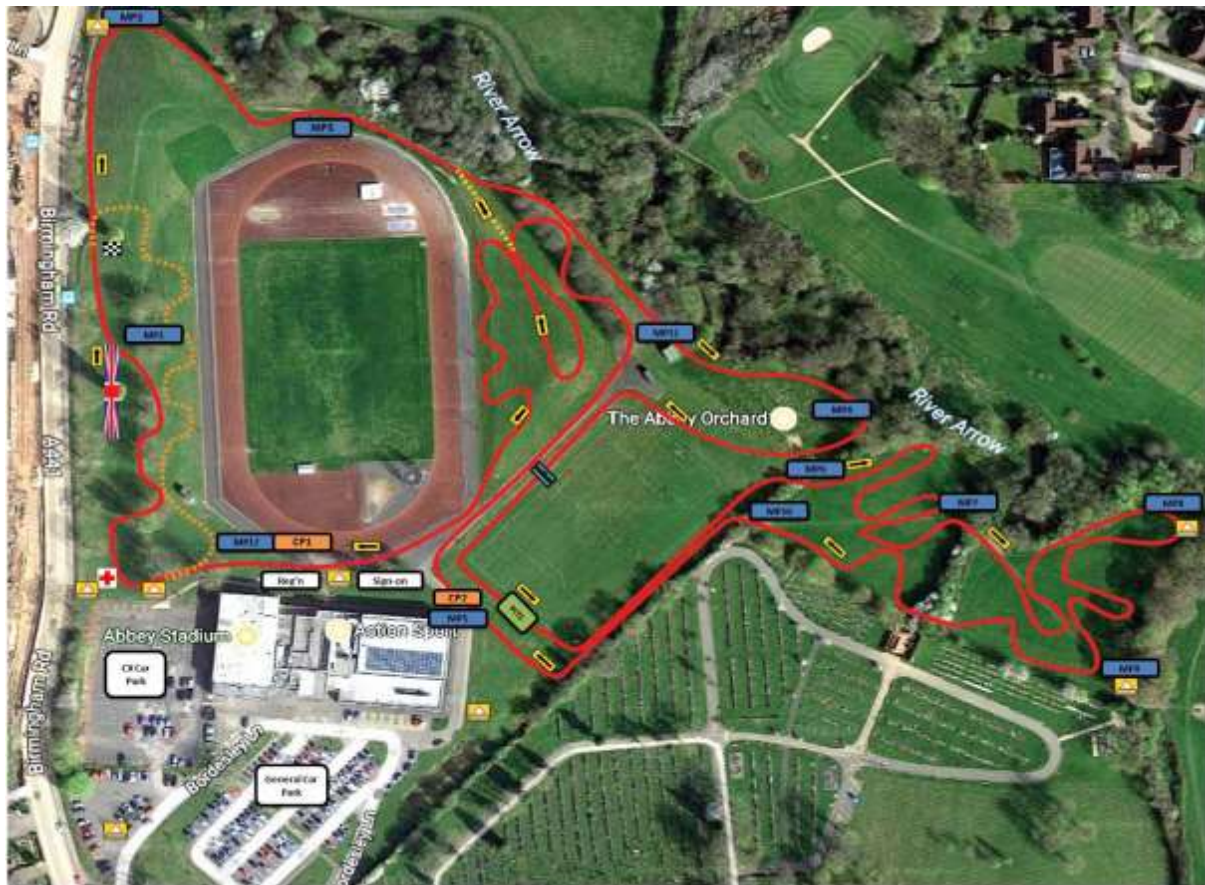
Course

All race starts are to the road side of the running track. There will be a pre-race assembly area immediately adjacent to the start.

The U6/U8 course is a loop incorporating the start of the main course then loops back as shown by the orange dots on the course map.

The U10/U12 course has the same start then cuts across on the yellow dotted section to join the end of the main course.

All other races use the full course which consists of grassland, tarmac and gravel paths. In general the terrain is fairly flat but we have incorporated some off-camber sections, some switchback bends and a double hurdle section.



Spectators

Please use the crossing points when moving around the course. A good spot for watching and encouraging riders with their technique and for seeing them at multiple points is the stretch by the hurdles which is adjacent to Marshall Point 11 near the shipping containers. Course maps and other information will be on display near sign-on.

Double Pits

Situated close to the East end of the building and Crossing Point 2. There will be 6 racks provided for riders without helpers, please use these and do not lay bikes down in the pits as this is a hazard to others.

Presentations

U6, U8, U10 and U12 presentations will be directly after the U12 race.

Blacksheep Sports Timing

We welcome back Julian and his team from Blacksheep Sports Timing. Timing is fast and with accurate results appearing early evening. Errors are rare and tend to be created by riders not wearing the correct chip or forgetting to wear it. Result queries will be handled up to 48 hours after the results are published by email to blacksheepsportsltd@gmail.com

Please remember:

- Check your race number and Chip number are the same.
- When you finish, make a mental note of who is in front and behind you. If there is a chip error it is then easy to track the problem from manual recording.
- Chips must be returned at the end of the race.

We hope you have a great days racing and look forward to seeing you.

John Potts